

Specifications

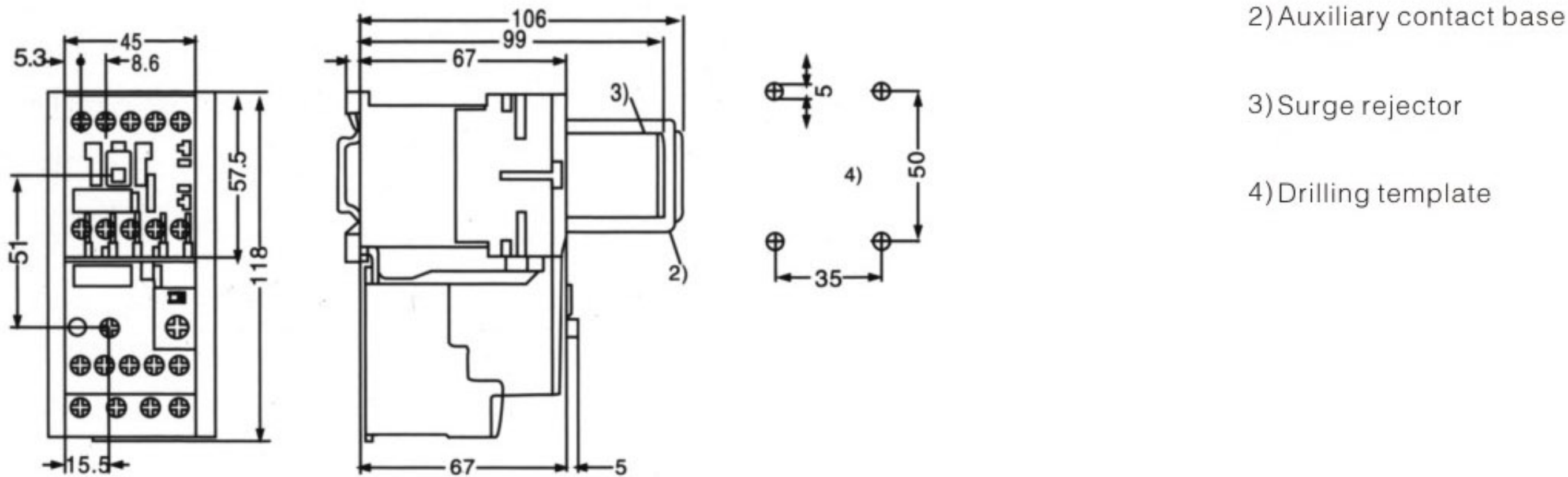
Specification & Model Used for motor control AC-3 07-95A Control AC

Model	Specification	Rated working category	AC-1 utilization category			Power of Three-phase AC motor AC-2 & AC-3 (kW)				Installation mode
		Working current Ie/A under 400V	Working current Ie/A under 40°C	Working current Ie/A under 60°C	230V	400V	500V	690V		
M3RT(3RT)-07	S00	7	18	16	2.2	3	3.5	4	1、 Bolt installation 2、 35mm guideway installation	
M3RT(3RT)-09		9	22	20	3	4	4.5	5.5		
M3RT(3RT)-12		12	22	20	3	5.5	5.5	5.5		
M3RT(3RT)-09	S0	9	40 ¹⁾	35	3	4	4.5	4.5	1、 Bolt installation 2、 35mm guideway installation	
M3RT(3RT)-12		12	40 ¹⁾	35	3	5.5	7.5	7.5		
M3RT(3RT)-17		17	40 ¹⁾	35	4	7.5	10	11		
M3RT(3RT)-25		25	40 ¹⁾	35	5.5	11	11	11		
M3RT(3RT)-32	S2	32	50	45	7.5	15	18.5	18.5	1、 Bolt installation 2、 35mm guideway installation	
M3RT(3RT)-40		40	60	55	11	18.5	22	22		
M3RT(3RT)-50		50	55	50	15	22	22	22		
M3RT(3RT)-65	S3	65	100	90	18.5	30	37	45	1、 Bolt installation 2、 35mm or 75mm guideway installation	
M3RT(3RT)-80		80	120	100	22	37	45	55		
M3RT(3RT)-95		95	120	100	22	45	55	55		

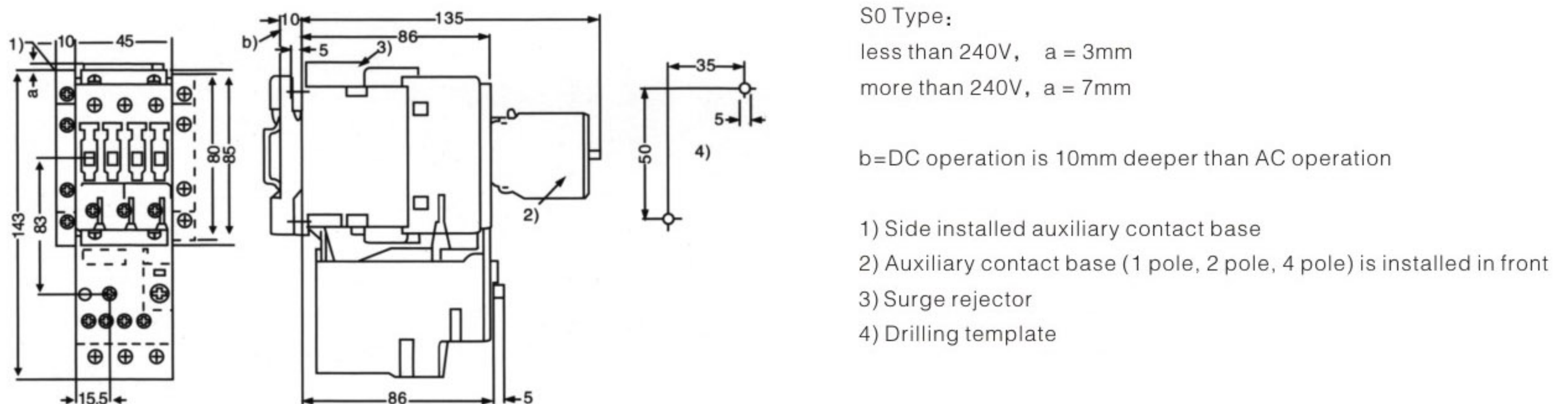
1) minimum sectional area of joint face

The external fixing dimension

S00 Type Contactors



S0 Type Contactors



The external fixing dimension

S2 Type:

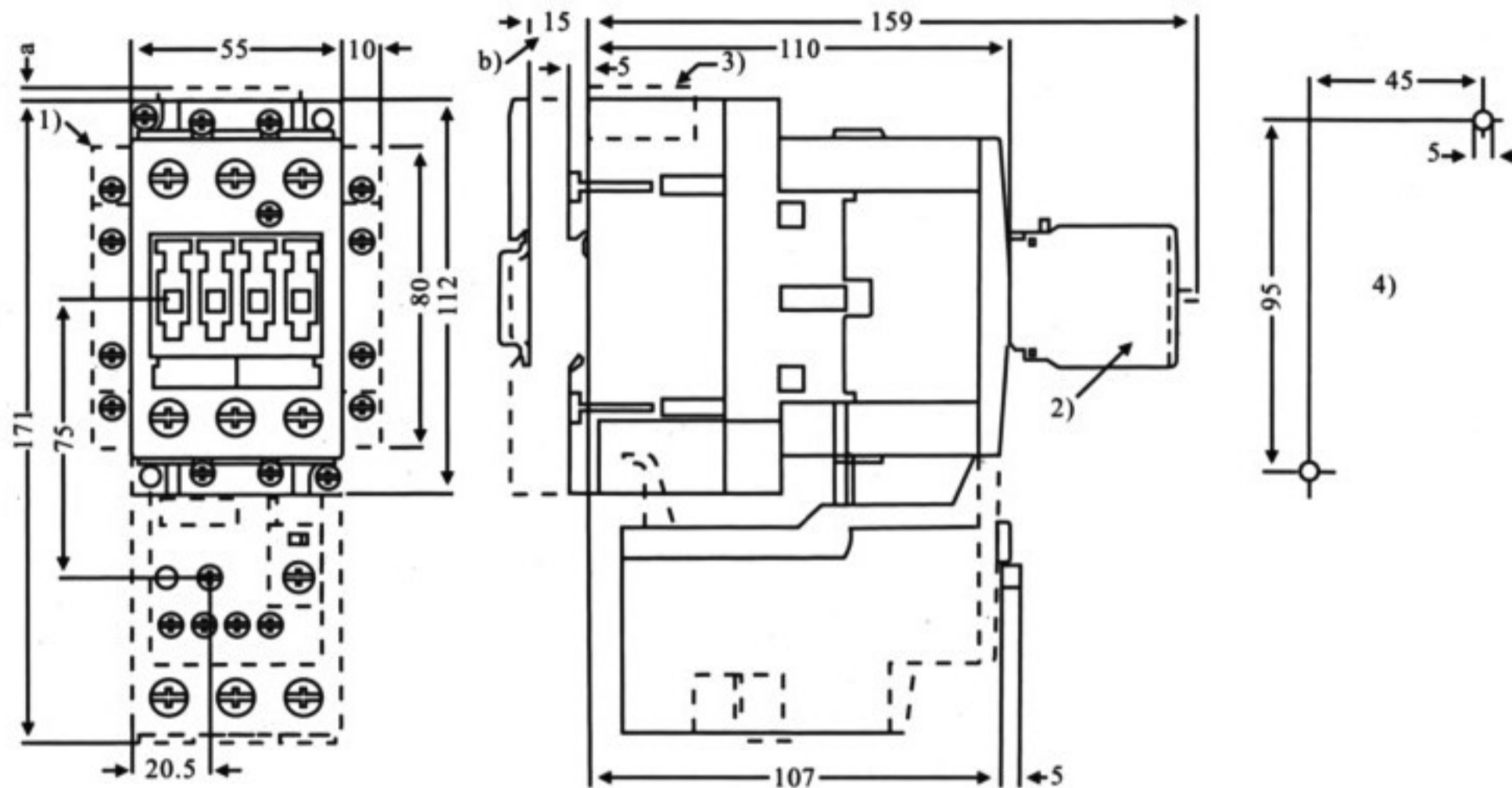
When with rheostat < 240V, diode components a=0mm

When with rheostat > 240V, a=3.5mm

When with resistive-capacitive, a=17mm

b=DC operation is 15mm deeper than AC operation

- 1) Side installed auxiliary contact base
- 2) Auxiliary contact base (1 pole, 2 pole, 4 pole) is installed in front
- 3) Surge rejector
- 4) Drilling template



S3 Type

When with rheostat and diode components < 240V, a=0mm

When with rheostat > 240V, a=3.5mm

When with resistive-capacitive, a=17mm

b=DC operation is 13mm deeper than AC operation

- 1) Side installed auxiliary contact base
- 2) Auxiliary contact base (1 pole, 2 pole, 4 pole) is installed in front Dimensions of auxiliary contact base of bolt connection and hutch-shape clip head connection are same.
- 3) Surge rejector
- 4) Drilling template
- 5) 35mm standard installation measures up with EN50022 Guideway (15mm depth) or 75mm standard installation measures up with EN50023
- 6) 4mm inner hexagonal column-head shape bolt

