

# EH DATA SHEET

## Application

EH series AC contactors is mainly used in the electric power circuit of AC 50Hz or 60Hz, rated voltage to 690V, current to 1200A for making and breaking circuit, and it can be formed into motor starter with thermal relay or electronic protector for protecting from overload circuit.

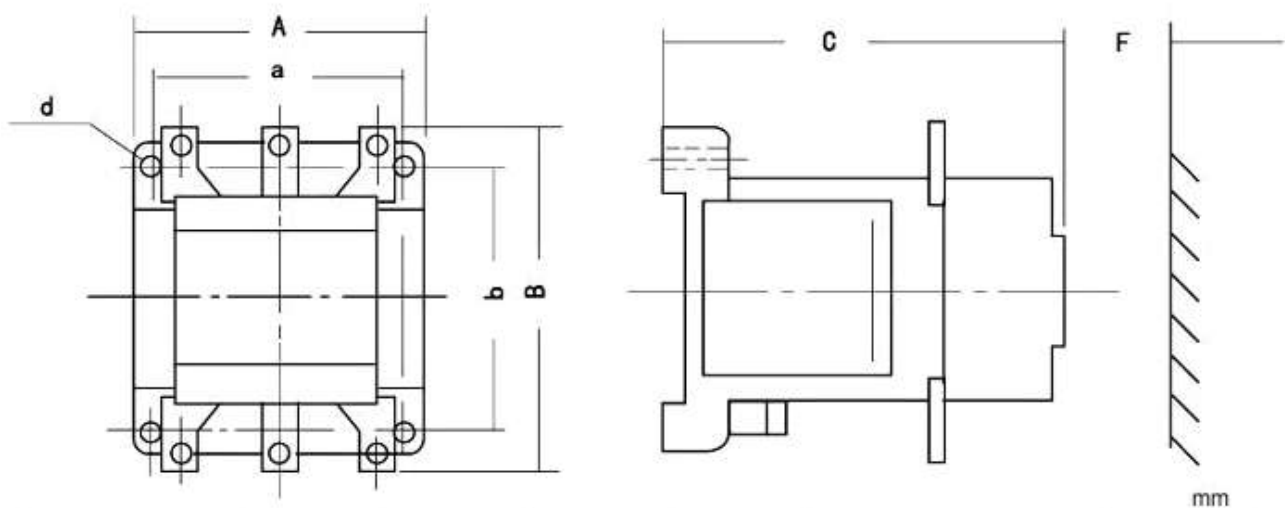
## Main technical parameter

EH		6	9	12	16	25	32	40	50	63	75		
Ui V		690											
Ith A		20	26	28	28	45	65	100	125	125	125		
Ue V		220											
		380											
		660											
Under Interruption Period Operation System Ie (A)	AC-1	20	22	24	28	45	55	70	100	115	125		
	AC-3	6	9	12	16	25	30	40	50	63	75		
		6	9	12	16	25	30	40	50	63	75		
	AC-4	6	9	12	16	25	30	40	50	63	75		
AC-3 Pe Kw	1.5	2.2	3	4	6.5	9	11	15	18.5	22			
	2.2	4	5.5	7.5	11	15	18.5	22	30	37			
		4	5.5	5.5	11	15	22	30	37	45			
Non-interrupt Operation Ie(A)		20	22	24	28	45	55	70	100	115	125		
EH		80	90	100	145	175	210	260	300	370	550	700	800
Ui V		690											
Ith A		145	160	200	230	260	300	400	445	550	800	1000	1000
Ue V		220											
		380											
		660											
Under Interruption Period Operation System Ie (A)	AC-1	145	160	200	230	260	300	400	445	550	800	1000	1000
	AC-3	80	90	120	145	185	210	260	305	400	550	700	750
		80	90	120	145	185	210	260	305	400	550	700	750
		65	70	120	120	170	210	250	280	370	550	700	750
	AC-4	80	80	117	125	146	175	250	250	350	450	630	630
		80	80	117	125	146	175	250	250	350	450	630	630
30		35	47	55	66	55	95	95	117	140	185	185	

AC-3 Pe	22	22	30	45	55	59	80	90	110	160	220	220
Kw	40	45	55	75	90	110	140	160	200	280	370	400
	45	59	110	110	132	160	200	250	355	500	600	650
Non-interrupt Operation Ie(A)	145	160	200	230	260	300	400	445	550	800	1000	1000
Aux Contacts Code	Ith A	UI V	Ue V		Ie A		Contacts type and quantity	Rated controlling capability				
			AC	DC	AC	DC		AC(VA)	DC(W)			
EHF1	10	690	127	48	0.8	0.63	NO1 or NC1	100	30			
			220	60	0.45	0.5						
EHF2			380	110	0.26	0.27	NO1					
EHF3			660	220	0.15	0.14	NC1					

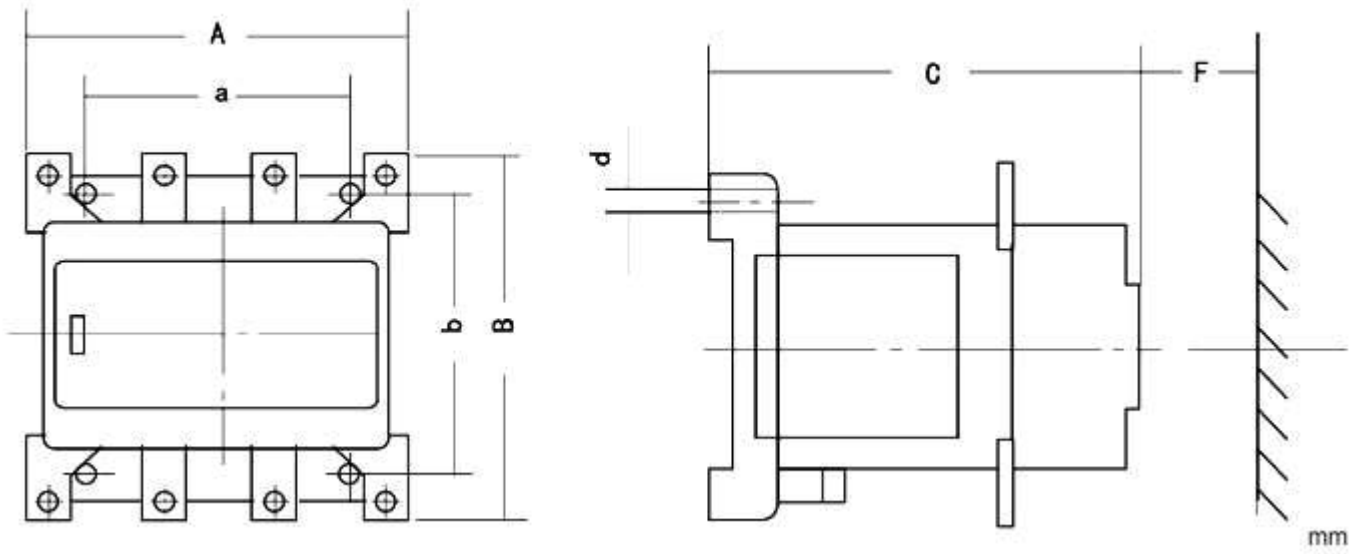
### Installation dimensions

three poles



Basic pecification	A max	B max	C max	a	b	d	F
EH-6	54	58	48	35?36	50	4.5	
EH-9~16	46	75	82	35	60?55?50	4.5	15
EH-25	55	92	95	45	80?75?70	4.5	15
EH-32	55	92	110	45	80?75?70	4.5	15
EH-40~75	71	112	110	60	100?90	6	20
EH-80~90	103	132	138	90	100	5.5	30
EH-100	125	158	144	110	120	5.5	40
EH-145	125	174	144	110	120	5.5	40
EH-175~210	137	200	170	120	140	6.5	15
EH-260~300	177	210	176	160	140	6.5	30
EH-370~550	200	273	227	170	200	6.5	40
EH-700	245	296	227	220	200	6.5	40
EH-800	245	346	227	220	200	6.5	40

four poles



Basic Secification	A max	B max	C max	a	b	d	F
EH-6	54	58	48	35?36	50	4.5	
EH-9~16	46	75	82	35	60?55?50	4.5	15
EH-25	55	92	95	45	80?75?70	4.5	15
EH-40~75	92	112	110	60	100?90	6	20
EH-100	165	158	154	120	140	6.5	40
EH-145	165	172	154	120	140	6.5	40
EH-175	201	198	175	160	140	6.5	15
EH-210	201	198	175	160	140	6.5	15
EH-370	270	273	227	220	200	6.5	40
EH-550	270	273	227	220	200	6.5	40